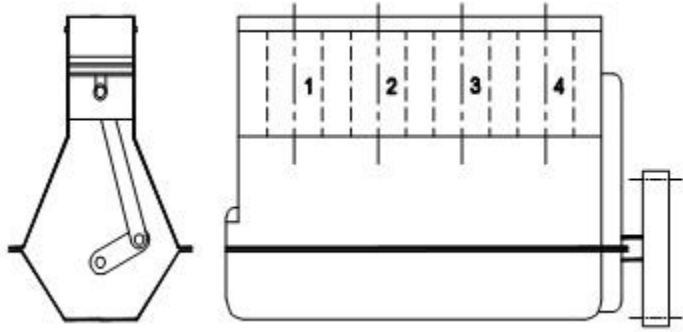


## ITI Mechanic Diesel 1st Year Module 6 Service Equipments and Diesel Engine

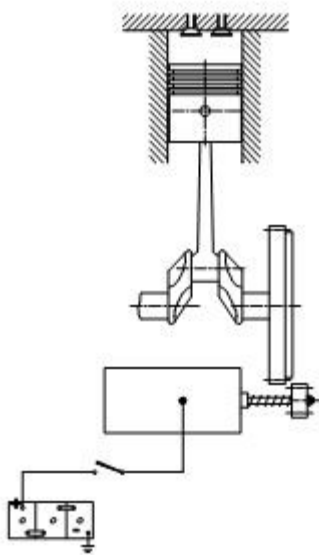
(1). What is the type of engine?



- (A) In-line engine
- (B) 'V' engine
- (C) Opposed engine
- (D) Radial engine

Correct Answer : A

(2). What is the name of the starting system?



- (A) Compressed air cranking
- (B) Hydraulic cranking
- (C) Electric motor cranking
- (D) Gasoline engine starting

Correct Answer : C

(3). How the piston stroke is defined?

- (A) Double the throw
- (B) Half of the throw
- (C) Equal to the throw
- (D) 4 times of throw

Correct Answer : A

(4). Which component of four stroke cycle engine supplies power during idle strokes?

- (A) Piston
- (B) Crank shaft
- (C) Connecting rod
- (D) Flywheel

Correct Answer : D

(5). Which type of engine has more engine speed and more combustion pressure?

- (A) Radial engine
- (B) 'V' engine
- (C) Opposed engine

(D) In-line engine

Correct Answer : A

(6). What is called the distance between TDC to BDC?

(A) Stroke

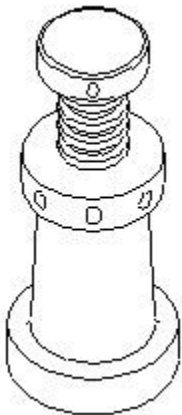
(B) Cycle

(C) Power

(D) Torque

Correct Answer : A

(7). What is the name of equipment?



(A) Jack stand

(B) Hydraulic Jack

(C) Mechanical Jack

(D) Hydraulic car hoist

Correct Answer : C

(8). What is the purpose of a pre combustion chamber?

- (A) Increase scavenging
- (B) Delay the injection
- (C) Compress the fuel mixture
- (D) Atomising the fuel mixture with heated air

Correct Answer : D

(9). What is the formula for mechanical efficiency?

(A)  $\frac{\text{BHP}}{\text{IHP}} \times 100$

(B)  $\frac{\text{IHP}}{\text{BHP}} \times 100$

(C)  $\frac{\text{BHP} - \text{IHP}}{\text{BHP}} \times 100$

(D)  $\frac{\text{IHP} - \text{BHP}}{\text{IHP}} \times 100$

Correct Answer : A

(10). What is the name of the indicator?



(A) Seat belt

(B) Air bag

(C) Brake

(D) ABS

Correct Answer : C

(11). What is indicate 2498 CC in vehicle specification?

(A) Engine capacity

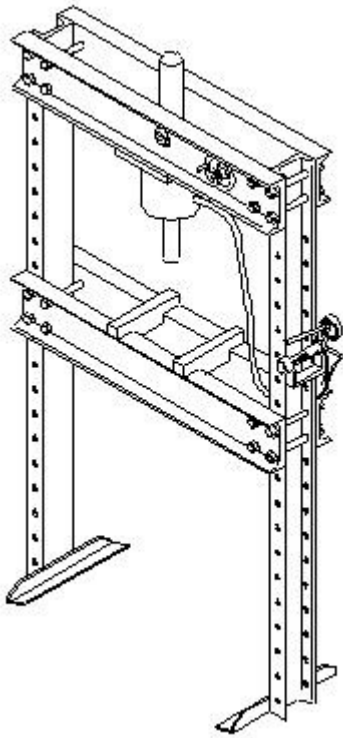
(B) Full tank capacity

(C) Single bore capacity

(D) Master cylinder capacity

Correct Answer : A

(12). What is the name of the equipment?



- (A) Car hoist
- (B) Grease gun
- (C) Hydraulic jack
- (D) Hydraulic press

Correct Answer : D

(13). Which is the digit indicate the engine type in the groups of VDC 17 digit of VIN number?

- (A) 2
- (B) 3
- (C) 5
- (D) 8

Correct Answer : D

(14). Which is increasing the torque in the steering system?

- (A) Drop arm
- (B) Gear box
- (C) Fluid plump
- (D) Knuckle arm

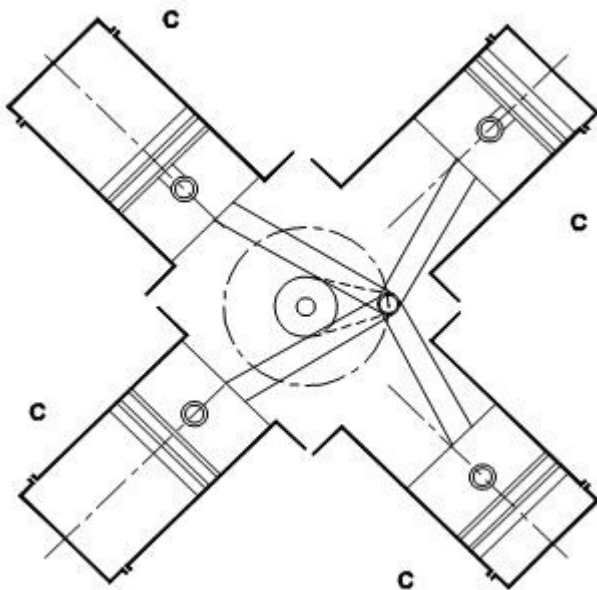
Correct Answer : B

(15). What is the use of bourdon tube type gauge?

- (A) To measure oil pressure
- (B) To measure oil temperature
- (C) To measure oil volume
- (D) To measure oil viscosity

Correct Answer : A

(16). What is the type of engine?



- (A) In-line engine
- (B) 'V' engine
- (C) Opposed engine
- (D) Radial engine

Correct Answer : D

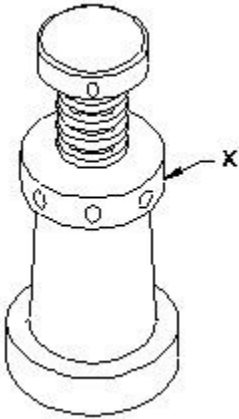
(17). What is the formula for compression ratio?

- (A)  $\frac{V_S + V_C}{V_C}$
- (B)  $\frac{V_S + V_C}{V_S}$
- (C)  $\frac{V_C}{V_S + V_C}$
- (D)  $\frac{V_S}{V_S + V_C}$

Correct Answer : A



(18). What is the name of part marked as 'X'?



- (A) Split pin
- (B) Top plate
- (C) Centre rod
- (D) Revolving disc

Correct Answer : D

(19). What is the term for 2 WD in vehicle specification?

- (A) Two wheel drive
- (B) Four wheel drive
- (C) Rear wheel drive
- (D) Front wheel drive

Correct Answer : A

(20). Which engine is also called as constant pressure cycle engine?

- (A) Otto cycle
- (B) Diesel cycle
- (C) Dual cycle

(D) Rankave cycle

Correct Answer : B

(21). Which is used for quick inspection under the chassis of a car?

(A) Stands

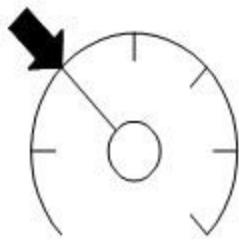
(B) Screw jack

(C) Trolley jack

(D) Two post hoist

Correct Answer : C

(22). What is the name of the indicator?



(A) Steering control

(B) Cruise control

(C) Traction control

(D) Stability control

Correct Answer : B

(23). What is the formula for BHP?

(A)  $\frac{2\pi NT}{4500}$

(B)  $\frac{4\pi NT}{4500}$

(C)  $\frac{6\pi NT}{4500}$

(D)  $\frac{8\pi NT}{4500}$

Correct Answer : A

(24). What is firing order?

- (A) Sequence of power stroke occurrence
- (B) Sequence of suction stroke occurrence
- (C) Sequence of compression stroke occurrence
- (D) Sequence of exhaust stroke occurrence

Correct Answer : A

(25). Which engine is more economical and compact?

- (A) Radial engine
- (B) Opposed engine
- (C) 'V' engine
- (D) In-line engine

Correct Answer : C

(26). What is the name of the indicator?



- (A) Seat belt indicator
- (B) Air bag indicator
- (C) Brake indicator
- (D) ABS indicator

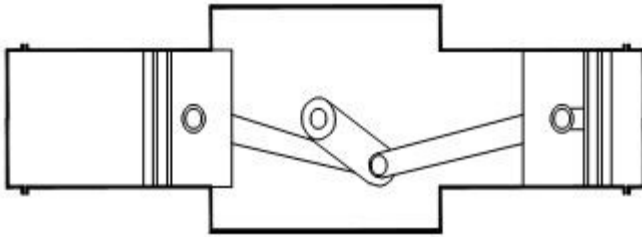
Correct Answer : A

(27). Which engine is most preferred in aeroplanes?

- (A) In-line engine
- (B) 'V' engine
- (C) Opposed engine
- (D) Radial engine

Correct Answer : D

(28). What is the type of engine?



- (A) In-line engine
- (B) 'V' engine
- (C) Opposed engine
- (D) Radial engine

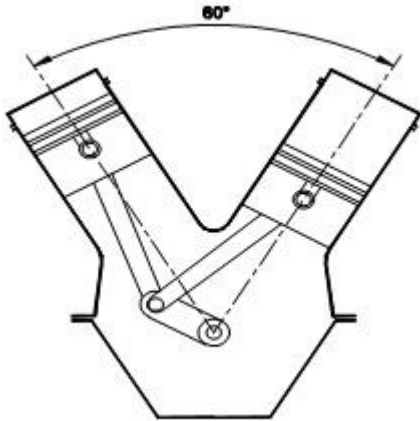
Correct Answer : C

(29). Which is the high fuel efficient engine?

- (A) Opposed engine
- (B) 'V' engine
- (C) Radial engine
- (D) In-line engine

Correct Answer : C

(30). What is the type of engine?



- (A) In-line engine
- (B) 'V' engine
- (C) Opposed engine
- (D) Radial engine

Correct Answer : B

(31). What is the name of the indicator?



- (A) Centre differential lock
- (B) Proximity sensor
- (C) Economy mode
- (D) Electric power steering

Correct Answer : D

(32). How do you classify the diesel engine?

- (A) Spark ignition engine
- (B) Constant volume engine
- (C) Constant pressure engine
- (D) External compression engine

Correct Answer : C

(33). Which type of vehicle capable of sensing its environment and navigating without human input?

- (A) Diesel car
- (B) Petrol car
- (C) Electric car
- (D) Driver less car

Correct Answer : D

(34). What is the name of the indicator?

**TCS  
OFF**

- (A) Dead bulb
- (B) Cruise control
- (C) Traction control

(D) Stability control

Correct Answer : C

(35). What is the formula for IHP?

(A) 
$$\frac{PLAN}{4500} \times K$$

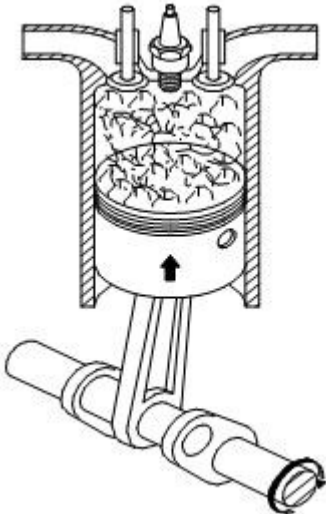
(B) 
$$\frac{VLAN}{4500} \times K$$

(C) 
$$\frac{AVLAN}{4500} \times K$$

(D) 
$$\frac{PVLN}{4500} \times K$$

Correct Answer : A

(36). What is the name of the stroke?

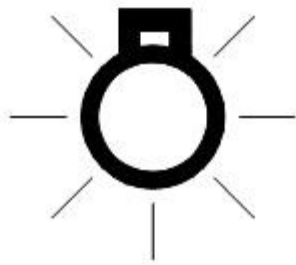




- (A) Suction stroke
- (B) Compression stroke
- (C) Power stroke
- (D) Exhaust stroke

Correct Answer : B

(37). What is the name of the indicator?



- (A) Dead bulb
- (B) Head light bulb
- (C) Indicator bulb
- (D) Dash board bulb

Correct Answer : A

(38). What is called the distance between centre of the crank pin to the centre of the main journal?

- (A) Stroke
- (B) Cycle
- (C) Throw
- (D) Efficiency

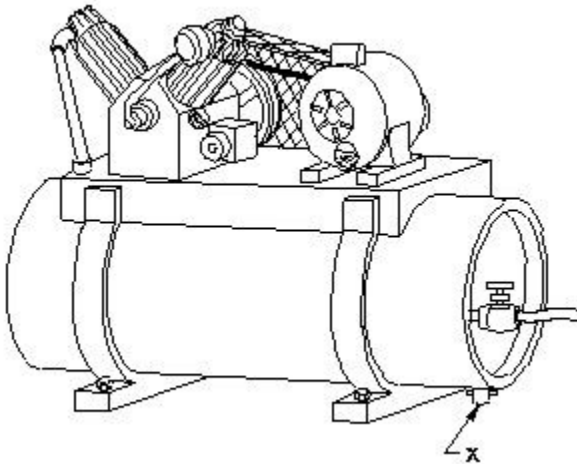
Correct Answer : C

(39). Which is the engine having cylinders in  $90^\circ$  each of 4 cylinders?

- (A) In-line engine
- (B) 'V' engine
- (C) Opposed engine
- (D) Radial engine

Correct Answer : D

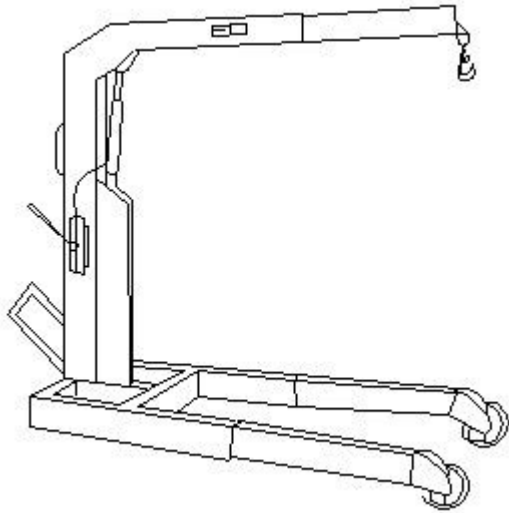
(40). What is the name of the equipment?



- (A) Car hoist
- (B) Engine hoist
- (C) Hydraulic jack
- (D) Hydraulic press

Correct Answer : B

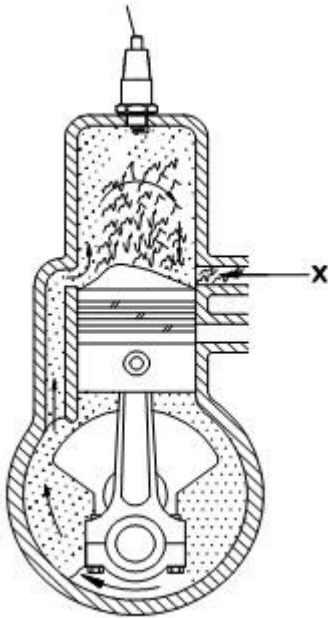
(41). What is the name of part marked as 'X'?



- (A) Belt
- (B) Cock
- (C) Motor
- (D) Drain plug

Correct Answer : D

(42). What is the name marked as 'x'?



- (A) Intake port
- (B) Exhaust port
- (C) Transfer port
- (D) Injection port

Correct Answer : B

(43). Which is the engine having cylinders at 60°?

- (A) In-line engine
- (B) 'V' engine
- (C) Opposed engine
- (D) Radial engine

Correct Answer : B

(44). Which is the engine adopts hand cranking?

- (A) Small engine
- (B) LMV engine
- (C) Heavy vehicles
- (D) Stationary engine

Correct Answer : A

(45). Which type service equipment used in car service station to lift the car?

- (A) Arbor press
- (B) Hydraulic jack
- (C) Hydraulic hoist

(D) Hydraulic press

Correct Answer : C

(46). Which is used to start a heavy earth moving engines?

(A) Hand cranking

(B) Electric motor cranking

(C) Compressed air cranking

(D) Gasoline engine cranking

Correct Answer : D

(47). Which is the most preferred starting system in LMV?

(A) Hand cranking

(B) Compressed air cranking

(C) Gasoline engine cranking

(D) Electric motor cranking

Correct Answer : D

(48). Which type of service equipment used to hold the lifted vehicle for a long period?

(A) Hoist

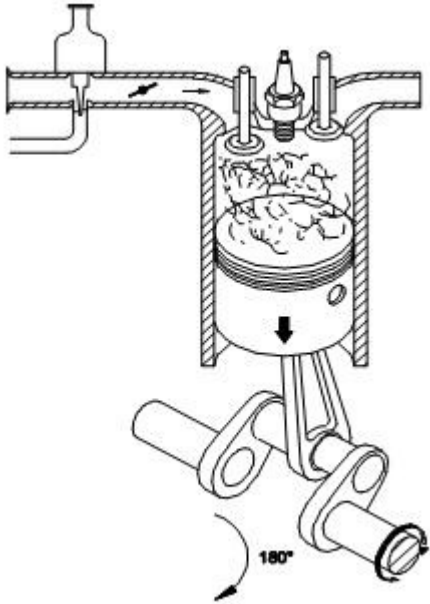
(B) Jack stand

(C) Arbor press

(D) Hydraulic jack

Correct Answer : A

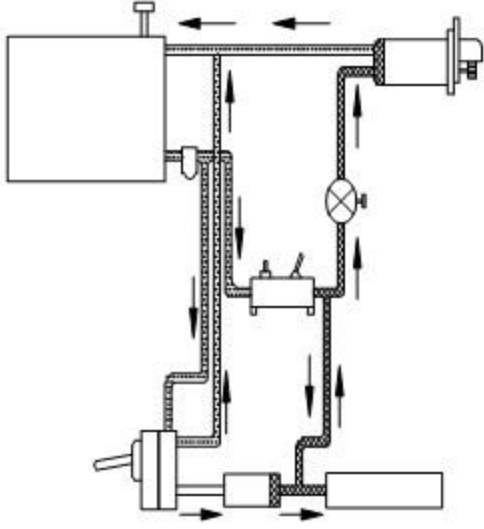
(49). What is the name of the stroke?



- (A) Compression stroke
- (B) Power stroke
- (C) Suction stroke
- (D) Exhaust stroke

Correct Answer : C

(50). What is the name of the starting system?



- (A) Compressed air cranking
- (B) Hydraulic cranking
- (C) Electric motor cranking
- (D) Gasoline engine cranking

Correct Answer : B