

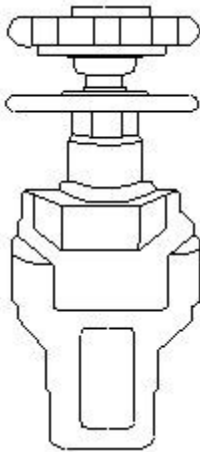
## ITI Mechanic Diesel 1st Year Module 5 Hydraulic and Pneumatics

(1). Which law is applicable in the hydraulic brake system?

- (A) Boyle's law
- (B) Pascal's law
- (C) Charles's law
- (D) Hooks law

Correct Answer : B

(2). What is the name of valve?



- (A) Non return valve
- (B) Flow control valve
- (C) 4/2 normally open
- (D) Pressure relief valve

Correct Answer : D

(3). Which law is applied in hydraulic brake system?

- (A) Boyle's law

- (B) Charles law
- (C) Pascal's law
- (D) Newton's law

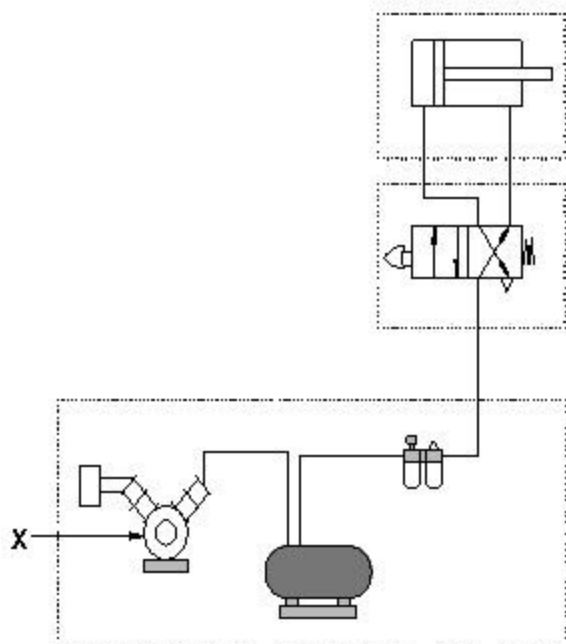
Correct Answer : C

(4). Which device converts mechanical into pneumatic energy?

- (A) Actuator
- (B) Generator
- (C) Alternator
- (D) Compressor

Correct Answer : D

(5). Name the pneumatic component marked as 'X'.



- (A) Actuator
- (B) Compressor

- (C) Control valve
- (D) Reservoir tank

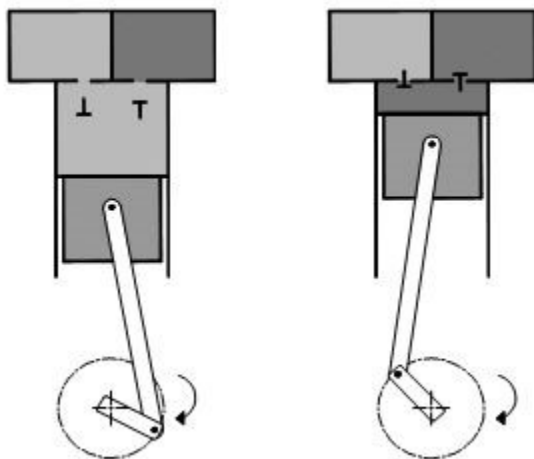
Correct Answer : B

(6). Which law is applicable to pneumatic system?

- (A) Boyle's Law
- (B) Pascal's law
- (C) Charles's Law
- (D) Hooks Law

Correct Answer : A

(7). What is the type of the compressor?



- (A) Gear type
- (B) Vane type
- (C) Rotary type
- (D) Reciprocating type

Correct Answer : D

(8). Which type of clutch system used in the slave cylinder?

- (A) Vacuum clutch
- (B) Hydraulic clutch
- (C) Over running clutch
- (D) Electromagnetic clutch

Correct Answer : B

(9). Which device converts hydraulic energy into mechanical energy?

- (A) Actuator
- (B) Regulator
- (C) Compressor
- (D) Control Valve

Correct Answer : A

(10). Which part in the internal gear pump act as seal?

- (A) Gears
- (B) Gasket
- (C) Sealing ring
- (D) Crescent-shaped spacer

Correct Answer : D

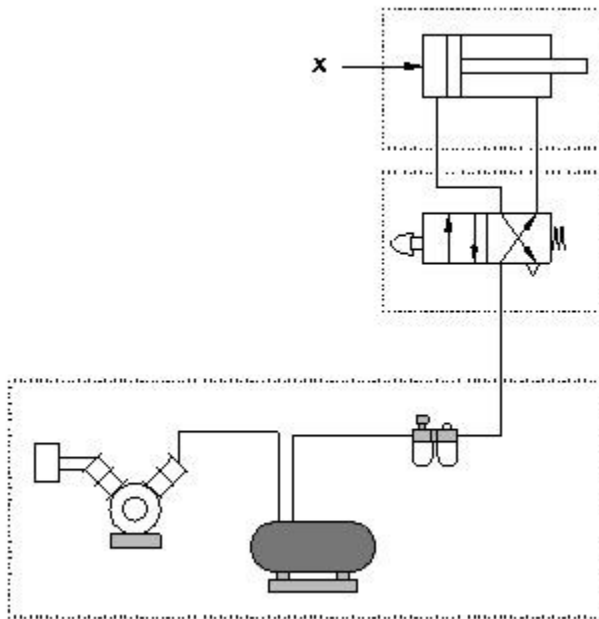
(11). Which act as a seal in the external gear pump?

- (A) Housing

- (B) Drive gear
- (C) Driver gear
- (D) Gear meshing

Correct Answer : D

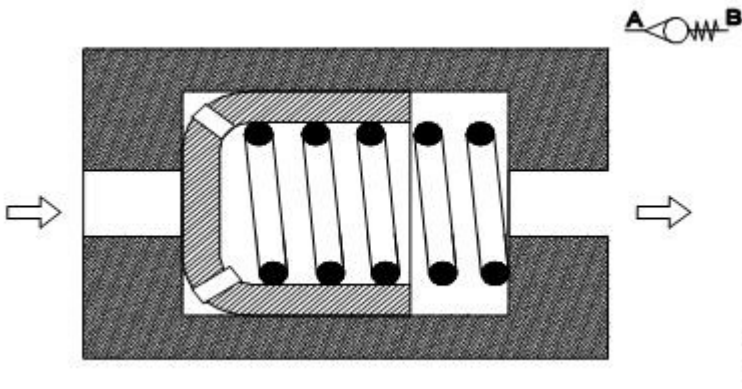
(12). What is the name of pneumatic component marked as 'X'?



- (A) Actuator
- (B) Compressor
- (C) Control valve
- (D) Reservoir tank

Correct Answer : A

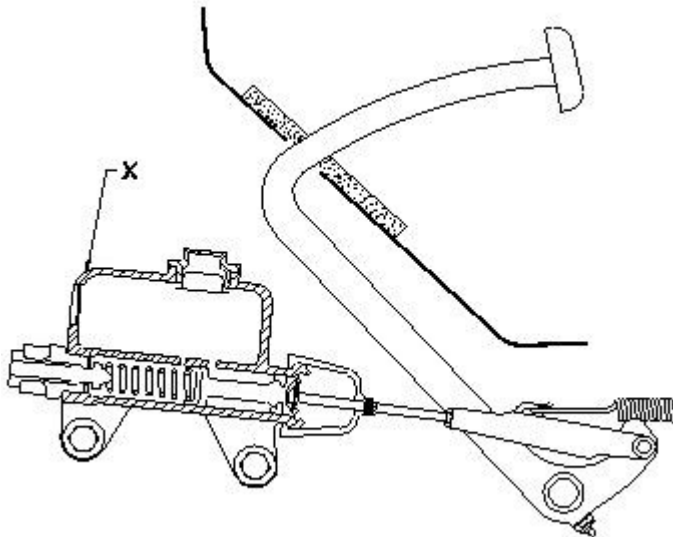
(13). What is the name of the valve?



- (A) Pressure relief valve
- (B) Bypass valve
- (C) Check valve
- (D) Inlet valve

Correct Answer : C

(14). What is the name of part marked as 'X'?



- (A) Pedal
- (B) Return spring
- (C) Wheel cylinder

(D) Master cylinder

Correct Answer : D

(15). Which is the important property of hydraulic oil?

(A) Viscosity

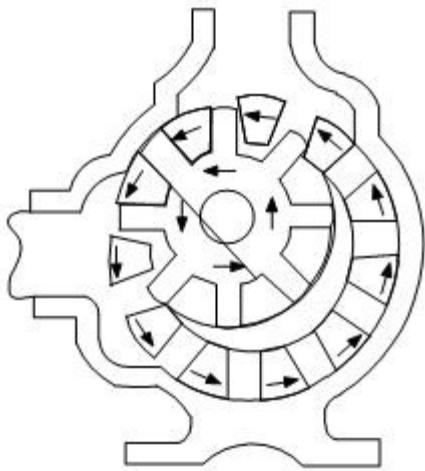
(B) Elasticity

(C) Tenacity

(D) Conductivity

Correct Answer : A

(16). What is the name of pump?



(A) Rotor Pump

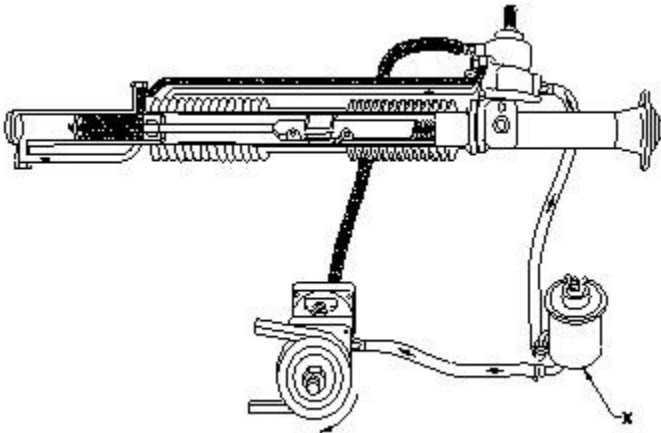
(B) Plunger pump

(C) Internal gear pump

(D) External gear pump

Correct Answer : C

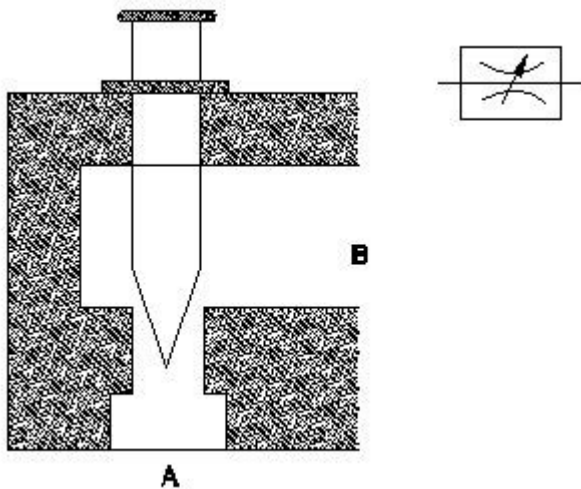
(17). What is the name of the part marked as 'X'?



- (A) Steering gear
- (B) Piston rod
- (C) Pressure line
- (D) Fluid reservoir

Correct Answer : D

(18). What is the name of valve?



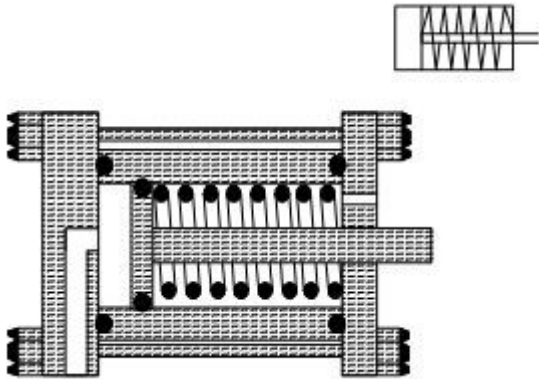
- (A) Flow control valve
- (B) Shut off valve
- (C) Non return valve



(D) Directional control valve

Correct Answer : A

(19). What is the name of the hydraulics cylinder?



(A) Double rod cylinder

(B) Double acting cylinder

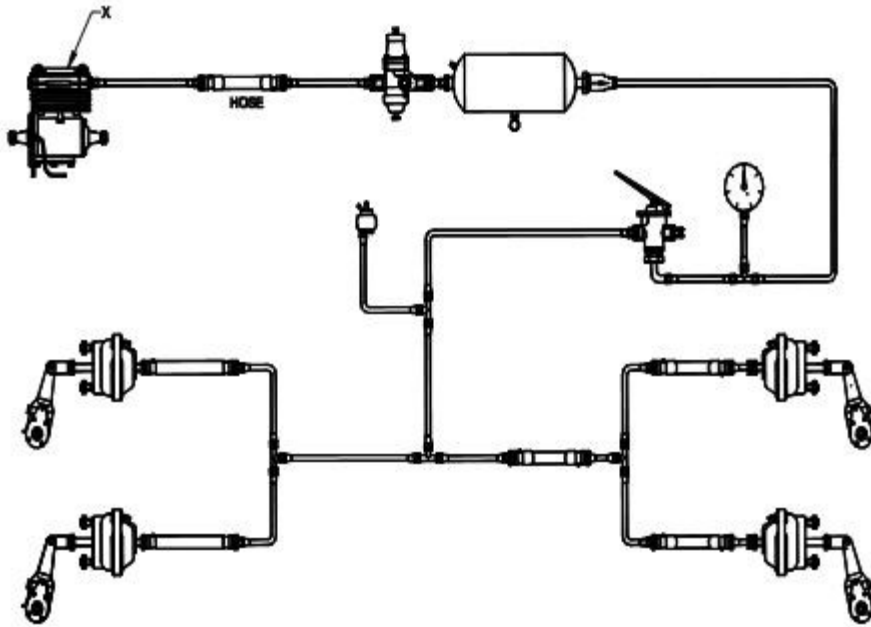
(C) Single acting cylinder

(D) Rotary acting cylinder

Correct Answer : C

www.itieexamyt.net

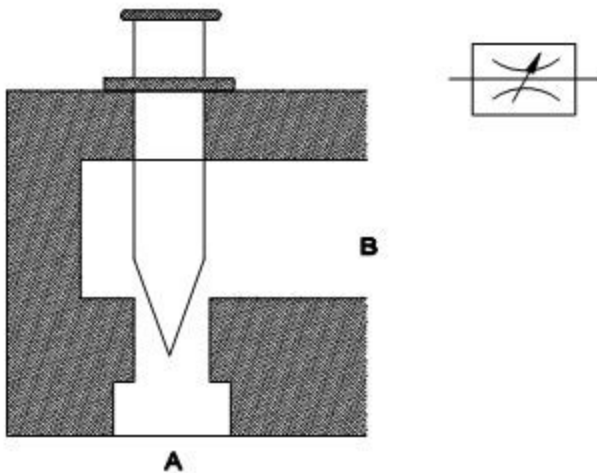
(20). What is the name of the part marked as 'X'?



- (A) Air tank
- (B) Air pressure gauge
- (C) Brake valve
- (D) Compressor

Correct Answer : D

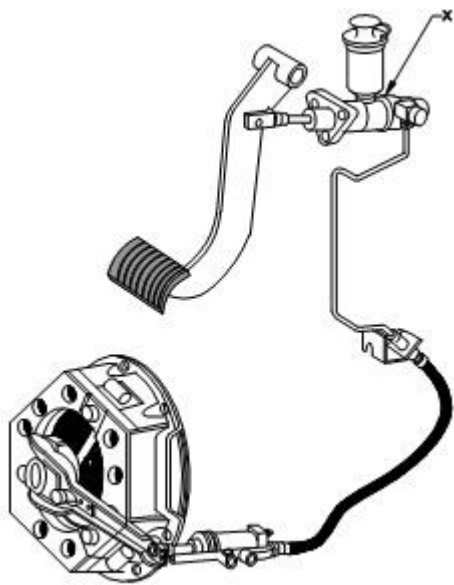
(21). What is the name of the valve?



- (A) Check valve
- (B) Choke valve
- (C) Throttle valve
- (D) Pressure relief valve

Correct Answer : C

(22). What is the name of the part marked as 'X'?



- (A) Slave cylinder
- (B) Master cylinder
- (C) Air cylinder
- (D) Wheel cylinder

Correct Answer : B

(23). Which type of pump used in the hydraulic jack?

- (A) Gear pump
- (B) Plunger pump

- (C) Vane pump
- (D) Internal gear pump

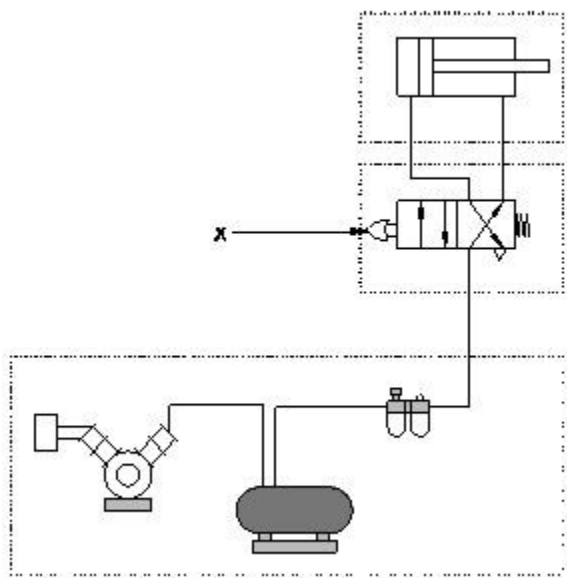
Correct Answer : B

(24). What is the function of brake valve in the pneumatic brake system?

- (A) Allow the air pressure to the system
- (B) Release the air to the atmosphere
- (C) Maintain air pressure in the tank
- (D) Allow air pressure to pressure gauge

Correct Answer : A

(25). Name the pneumatic component marked as 'X'.



- (A) Actuator
- (B) Compressor
- (C) Control valve
- (D) Reservoir tank

Correct Answer : C

[www.itieamyt.net](http://www.itieamyt.net)