

ITI Mechanic Diesel 1st Year Module 4 Electrical and Electronics

(1). Which is measured by ammeter in an electrical circuit?

- (A) Power
- (B) Voltage
- (C) Current
- (D) Resistances

Correct Answer : C

(2). What is the energy conversion of battery during charging?

- (A) Electrical energy into chemical energy
- (B) Electrical energy into heat energy
- (C) Chemical energy into electrical energy
- (D) Electrical energy into mechanical energy

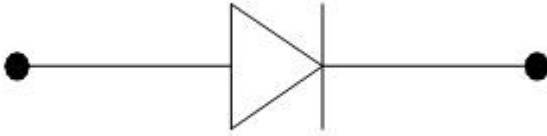
Correct Answer : A

(3). Which is a temperature sensitive resistor?

- (A) Diode
- (B) Thyristor
- (C) Thermistor
- (D) Transistor

Correct Answer : C

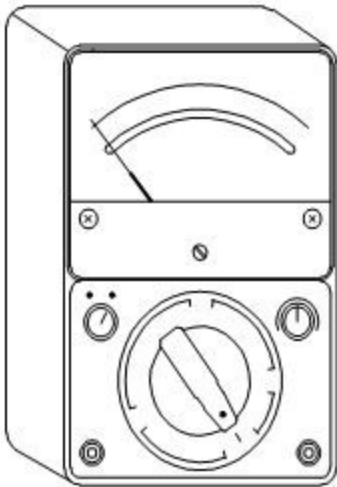
(4). What is the effect of the soft Iron bar in a closed circuit?



- (A) Shock effect
- (B) Heating effect
- (C) Magnetic effect
- (D) Chemical effect

Correct Answer : C

(5). What is the name of the part marked 'X' in nucleus?



- (A) Atom
- (B) Proton
- (C) Neutron
- (D) Electron

Correct Answer : B

(6). Which part is connected and completes the Horn circuit of the push button pressed?

- (A) Core
- (B) Tone disc
- (C) Horn points
- (D) Ground plate

Correct Answer : D

(7). What is the name of Electron Flow Movement?

- (A) Current
- (B) Power
- (C) Voltage
- (D) Resistance

Correct Answer : A

(8). Which electronic component is used as a solid state switch?

- (A) Inductor
- (B) Resistor
- (C) Capacitor
- (D) Transistor

Correct Answer : D

(9). Which device has the ability to store electrical charge?

- (A) Capacitor
- (B) Resistor

- (C) Insulator
- (D) Conductor

Correct Answer : A

(10). What is the purpose of colour code in cables?

- (A) Colour refers the current rating
- (B) Colour refers the voltage rating
- (C) Easy identification of each circuit
- (D) Refers the size of the wire

Correct Answer : C

(11). What type of resistor is used in the vehicle flasher unit?

- (A) Ballast resistor
- (B) Film resistor
- (C) Printed resistor
- (D) Integrated resistor

Correct Answer : A

(12). Which circuit the ballast resistor is used?

- (A) Horn circuit
- (B) Wiper circuit
- (C) Flasher circuit
- (D) Head lamp circuit

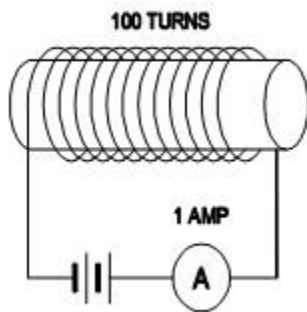
Correct Answer : C

(13). Which material resists the flow of electron?

- (A) Gold
- (B) Glass
- (C) Silver
- (D) Copper

Correct Answer : B

(14). What is the name of the electrical measuring instrument?



- (A) Ammeter
- (B) Voltmeter
- (C) Wattmeter
- (D) Multimeter

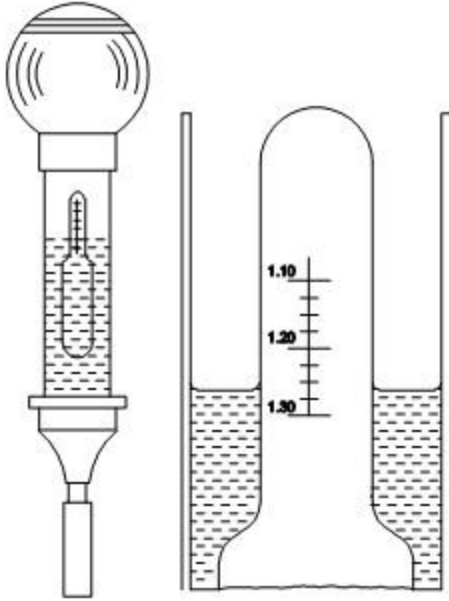
Correct Answer : A

(15). What is the specific gravity of fully charged battery?

- (A) 1.170 - 1.200
- (B) 1.210 - 1.230
- (C) 1.240 - 1.250
- (D) 1.260 - 1.280

Correct Answer : D

(16). What is the name of the Electronic Symbol?



- (A) Diode
- (B) Switch
- (C) Battery
- (D) Transistor

Correct Answer : A

(17). What is the net resistance 'R' if 'R₁' and 'R₂' resistance are connected in series?

- (A) $R = R_1 + R_2$
- (B) $R = R_1 - R_2$
- (C) $R = R_1 \times R_2$
- (D) $R = R_1/R_2$

Correct Answer : A

(18). Which electrical measuring instrument is fitted on the vehicle panel board?

- (A) Ammeter
- (B) Voltmeter
- (C) Wattmeter
- (D) Ohm meter

Correct Answer : A

(19). What is the ampere hour rating of battery deliver 5 ampere and period of 20 hours?

- (A) 80 Ampere hour
- (B) 90 Ampere hour
- (C) 100 Ampere hour
- (D) 110 Ampere hour

Correct Answer : C

(20). What determines whether a material is conductor, insulator or semiconductor?

- (A) Electrons
- (B) Valance electrons
- (C) Protons
- (D) Neutrons

Correct Answer : B

(21). What is the unit of capacitance?

- (A) Ohm
- (B) Voltage
- (C) Farad
- (D) Ampere

Correct Answer : C

(22). How the battery capacity is expressed?

- (A) Ampere - hour rating
- (B) Voltage - hour rating
- (C) Ampere rating
- (D) Voltage rating

Correct Answer : A

(23). What is the name of the circuit?



- (A) Open circuit
- (B) Short circuit
- (C) Closed circuit
- (D) Parallel circuit

Correct Answer : A

(24). What is the name of central part of an atom?

- (A) Proton

(B) Electron

(C) Neutron

(D) Nucleus

Correct Answer : D

(25). What is the mathematical expression of ohms law?

(A) $I = 1 R$

(B) $R = 1 V$

(C) $V = 1 R$

(D) $I = V + R$

Correct Answer : C

www.itieamyt.net