

ITI Mechanic Diesel 1st Year Module 11 Changing and Starting trouble shooting

(1). What is the mechanical cause for engine does not start?

- (A) Defective oil pump
- (B) Defective starter switch
- (C) Improper valve timing
- (D) No water in fuel

Correct Answer : C

(2). What is the reason for low oil pressure in engine?

- (A) Worn out crank and cam shaft bearing
- (B) Defective injector
- (C) Weak compression
- (D) Defective battery

Correct Answer : A

(3). What is the possible cause of engine over heating?

- (A) High water level
- (B) High oil level
- (C) Faulty water pump
- (D) Faulty injector

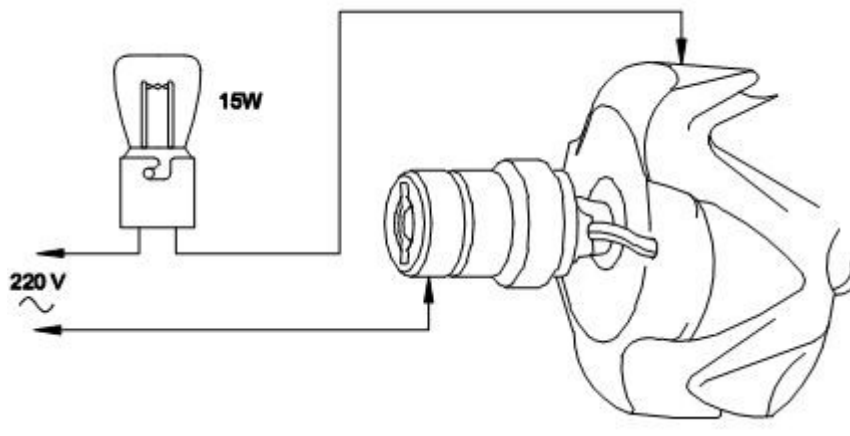
Correct Answer : C

(4). What is the remedy if engine over heats?

- (A) Top up oil level
- (B) Top up fuel level
- (C) Top up coolant level
- (D) Top up electrolyte level

Correct Answer : C

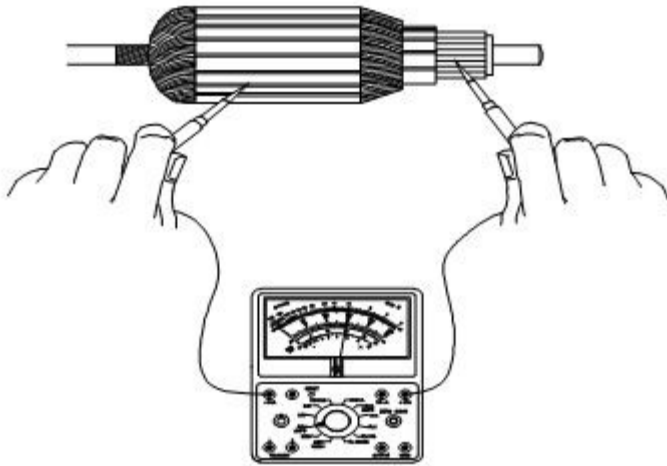
(5). What is the name of the test carried out?



- (A) Full load test
- (B) No load test
- (C) Short circuit test
- (D) Open circuit test

Correct Answer : C

(6). What is the name of test carried out?



- (A) Insulation test
- (B) Growler test
- (C) Continuity test
- (D) Open circuit test

Correct Answer : C

(7). What is the reason for low oil pressure in engine?

- (A) Defective pressure relief valve assembly
- (B) Defective pressure gauge
- (C) Loose battery clamp
- (D) Clogged air cleaner

Correct Answer : A

(8). What is the function of the regulator in an alternator?

- (A) Limits the alternator field current as necessary
- (B) Permits current to flow in one direction only

- (C) Takes heat from the diodes
- (D) To increase the current flow

Correct Answer : A

(9). Which one is connected in the circuit between battery and starting motor?

- (A) Starter switch
- (B) Solenoid switch
- (C) Plunger
- (D) Ignition switch

Correct Answer : B

(10). What is the cause of engine does not start when cold?

- (A) Detonation
- (B) Heater plug failure
- (C) Carbon deposit in combustion chamber
- (D) Incomplete combustion of fuel

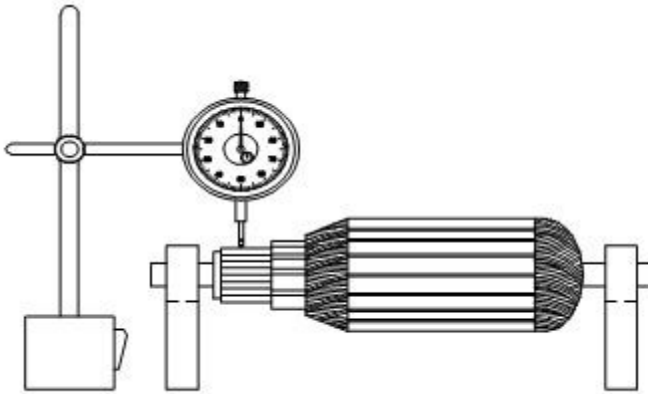
Correct Answer : B

(11). What is the possible cause of engine over heating?

- (A) High air draft
- (B) High circulation of water
- (C) Radiator core blocked
- (D) High water level in radiator

Correct Answer : C

(12). What is the name of the test carried out?



- (A) Growler test
- (B) Continuity test
- (C) Insulation test
- (D) Commutator run out test

Correct Answer : D

(13). Which part is used to allow current in only one direction in alternator?

- (A) Field coil
- (B) Armature
- (C) Voltage regulator
- (D) Diode

Correct Answer : D

(14). Which one produces AC supply?

- (A) Dynamo
- (B) Alternator

- (C) Self motor
- (D) Transformer

Correct Answer : B

(15). What is the effect of taper and ovality of a bore?

- (A) Compression loss
- (B) Misfiring
- (C) Difficult starting
- (D) False valve timing

Correct Answer : A

(16). Which one of the component used to convert AC to DC in an alternator?

- (A) Field coil
- (B) Pole pieces
- (C) Voltage regulator
- (D) Rectifier

Correct Answer : D

(17). What is the reason for high fuel consumption of diesel?

- (A) Defective thermostatic valve
- (B) Low compression
- (C) Loose battery terminals
- (D) Water in the fuel system

Correct Answer : B

(18). Which one of the cause for low voltage output from alternator?

- (A) Loose connection
- (B) Loose mountings
- (C) Fused indicator lamp
- (D) Broken drive belt

(Correct Answer : A

(19). What is the reason for engine over heating?

- (A) Defective starting motor
- (B) External fuel leak
- (C) Improper injection timing
- (D) Oil pressure high

Correct Answer : C

(20). Which one is the possible cause for charges at high rate?

- (A) Loose mounting
- (B) Blown fuse wire
- (C) Broken drive belt
- (D) Voltage regulator winding open

Correct Answer : D

(21). What is the reason for high oil consumption?

- (A) Defective pressure gauge

- (B) Improper valve timing
- (C) Excessive valve guide clearance
- (D) Clogged fuel filter

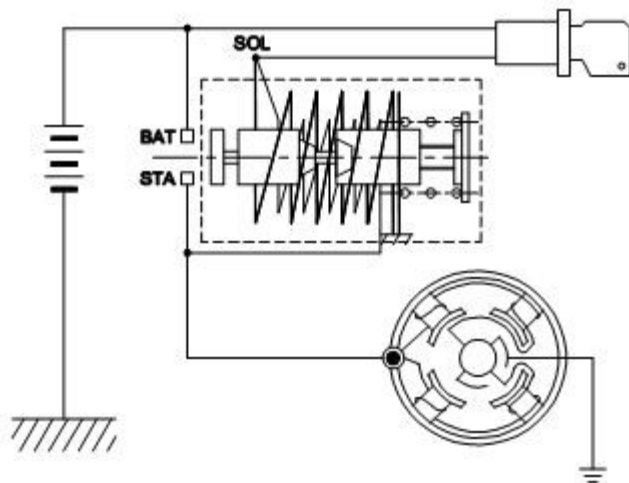
Correct Answer : C

(22). What is the mechanical cause for engine does not start?

- (A) Starter motor mounting bolt loose
- (B) Defective alternator
- (C) Defective thermostat valve
- (D) Clogged fuel filter

Correct Answer : D

(23). What is the name of the circuit?



- (A) Charging circuit
- (B) Lighting circuit
- (C) Ignition circuit
- (D) Starting circuit

Correct Answer : D

(24). What is the cause of low power generation?

- (A) Clogged oil filter
- (B) Clogged fuel filter
- (C) Correct injection timing
- (D) More supply of fuel

Correct Answer : B

(25). What is the reason for engine over heating?

- (A) Defective pressure relief valve
- (B) Clogged silencer
- (C) Air in fuel system
- (D) Water in fuel system

Correct Answer : B

(26). Which one is connected to the starter motor shaft?

- (A) Drive pinion
- (B) Ring gear
- (C) Drive pulley
- (D) Drive coupling

Correct Answer : A

(27). What is the possible cause of high oil consumption?

- (A) Clogged air cleaner
- (B) Clogged fuel filter
- (C) Worn out of piston rings
- (D) Low oil level

Correct Answer : C

(28). Where does slip ring used?

- (A) Dynamo
- (B) Alternator
- (C) Self motor
- (D) Transformer

Correct Answer : B

(29). What is the mechanical cause for engine does not start?

- (A) Loose fan belt
- (B) Clogged fuel tank vent hole
- (C) Defective regulator
- (D) Battery full charge

Correct Answer : B

(30). Which one produces DC supply?

- (A) Dynamo
- (B) Alternator
- (C) Self motor

(D) Transformer

Correct Answer : A

(31). Which system is used to crank the engine?

(A) Charging system

(B) Lighting system

(C) Starting system

(D) Cooling system

Correct Answer : C

(32). Which one is strong electromagnetic switch in starting system?

(A) Starter switch

(B) Solenoid switch

(C) Ignition switch

(D) Starter push switch

Correct Answer : B

(33). Which part prevents back flow of current in alternator?

(A) Regulator

(B) Rotor coil

(C) Slip ring

(D) Rectifier diode

Correct Answer : D

(34). Which is used to turn the engine fly wheel in starting system?

- (A) Drive pinion
- (B) Drive pulley
- (C) Drive coupling
- (D) Drive shaft

Correct Answer : A

(35). What is the reason for engine over heating?

- (A) Clogged fuel filter
- (B) Fuel leakage
- (C) External leakage of oil
- (D) Defective thermostat valve

Correct Answer : D

(36). What is the effect of detonation in an IC engine?

- (A) Late starting
- (B) Blow by
- (C) Knocking sound
- (D) Stopping of engine

Correct Answer : C

(37). What is the reason for high fuel consumption in diesel engine?

- (A) Oil level high
- (B) Air cleaner clogged

- (C) Fuel level in tank is high
- (D) High compression pressure

Correct Answer : B

(38). What is the possible cause for no charge when engine is running?

- (A) Slip ring proper seating
- (B) Battery with half-charge
- (C) Defective starting motor
- (D) Defective diode

Correct Answer : D

(39). What is the possible cause of low power generation?

- (A) More supply of air
- (B) More supply of fuel
- (C) Incomplete combustion of fuel
- (D) Defective oil filter

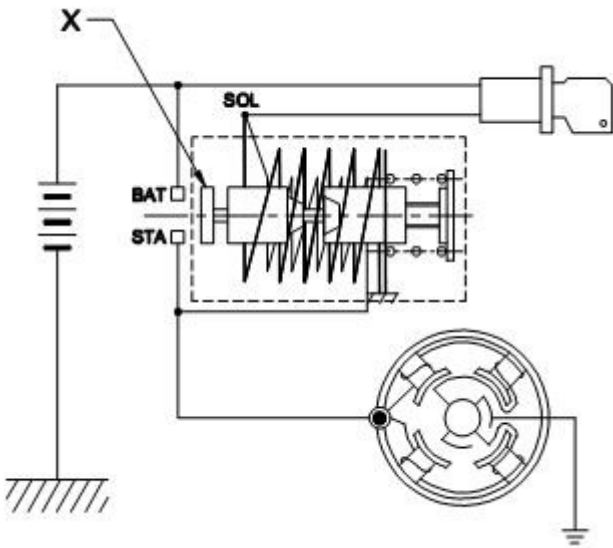
Correct Answer : C

(40). Where does commutator is used?

- (A) Dynamo
- (B) Alternator
- (C) Transformer
- (D) Ignition coil

Correct Answer : A

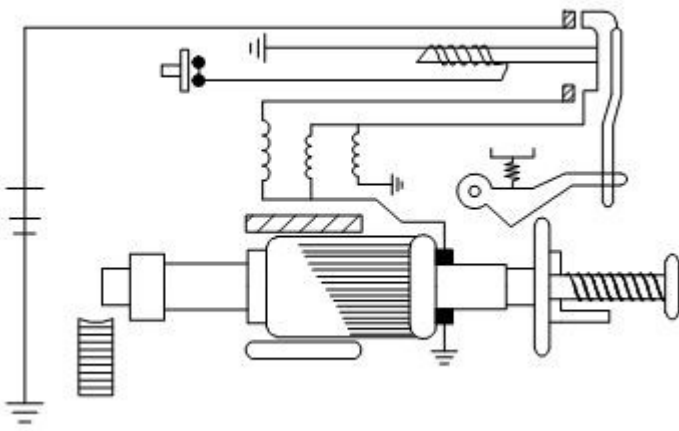
(41). What is the name of part marked as 'x'?



- (A) Solenoid winding
- (B) Battery
- (C) Plunger
- (D) Starting motor

Correct Answer : C

(42). What is the name of the drive mechanism?



- (A) Over running clutch drive
- (B) Bendix drive
- (C) Axial drive
- (D) Non axial drive

Correct Answer : C

(43). Which part is produce electricity in a vehicle?

- (A) Battery
- (B) Starting motor
- (C) Alternator
- (D) Ignition coil

Correct Answer : C

(44). What will happen if thermostat stuck?

- (A) Pipe by pass port open
- (B) Engine over heat
- (C) Engine run operating temperature
- (D) Engine get cool

Correct Answer : B

(45). What is the reason for engine low power generation?

- (A) Weak compression
- (B) Defective alternator
- (C) External leakage of oil

(D) Clogged thermostat valve

Correct Answer : A

(46). How does alternator get drive from engine?

(A) By coupling

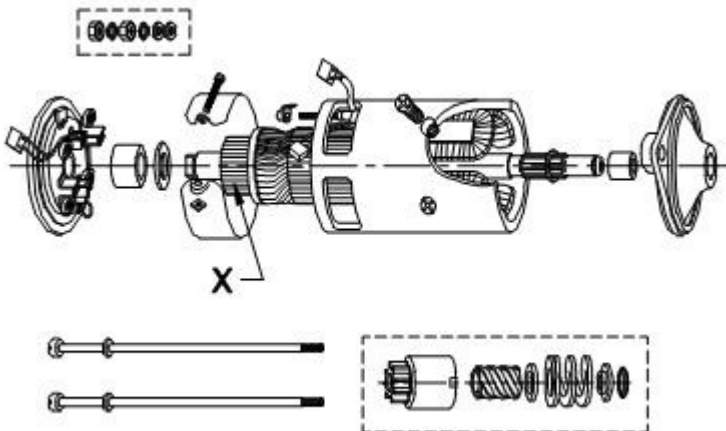
(B) By gear

(C) By chain

(D) By belt

Correct Answer : D

(47). What is the name of the part, marked as 'x'?



(A) Armature

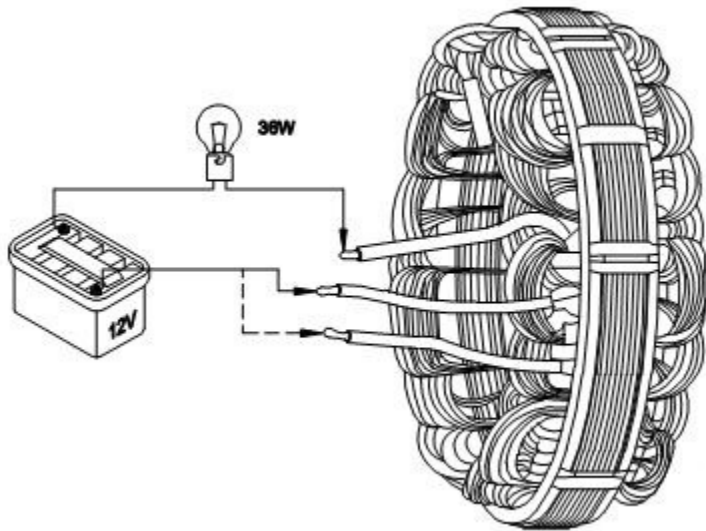
(B) Drive pinion

(C) Field coil

(D) Commutator

Correct Answer : D

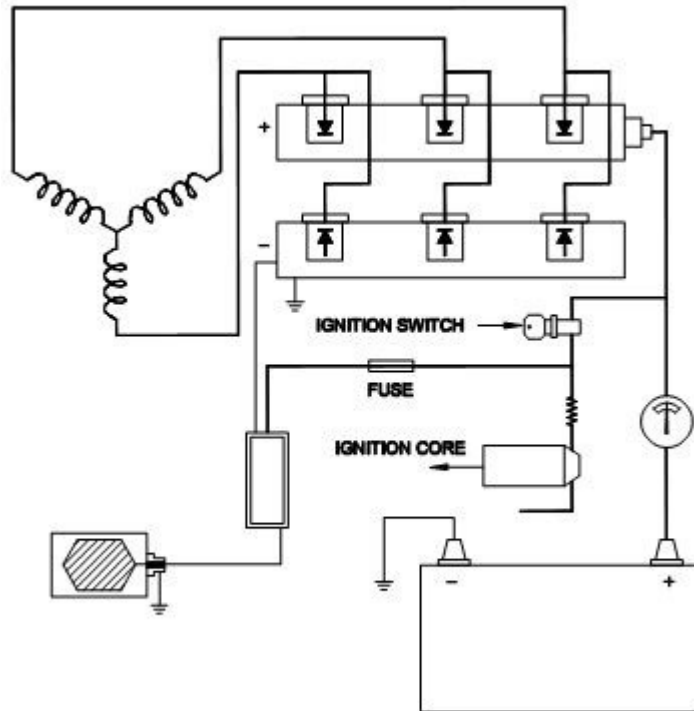
(48). What is the name of the test carried out?



- (A) Full load test
- (B) Short circuit test
- (C) Open circuit test
- (D) No load circuit

Correct Answer : C

(49). What is the name of the circuit?



- (A) Lighting circuit
- (B) Ignition circuit
- (C) Starting circuit
- (D) Charging circuit

Correct Answer : D

(50). Which one of the possible cause for alternator noisy?

- (A) Loose mounting
- (B) Blown fuse wire
- (C) Broken drive belt
- (D) Voltage regulator winding open

Correct Answer : A

